

PORVOO  BORGÅ



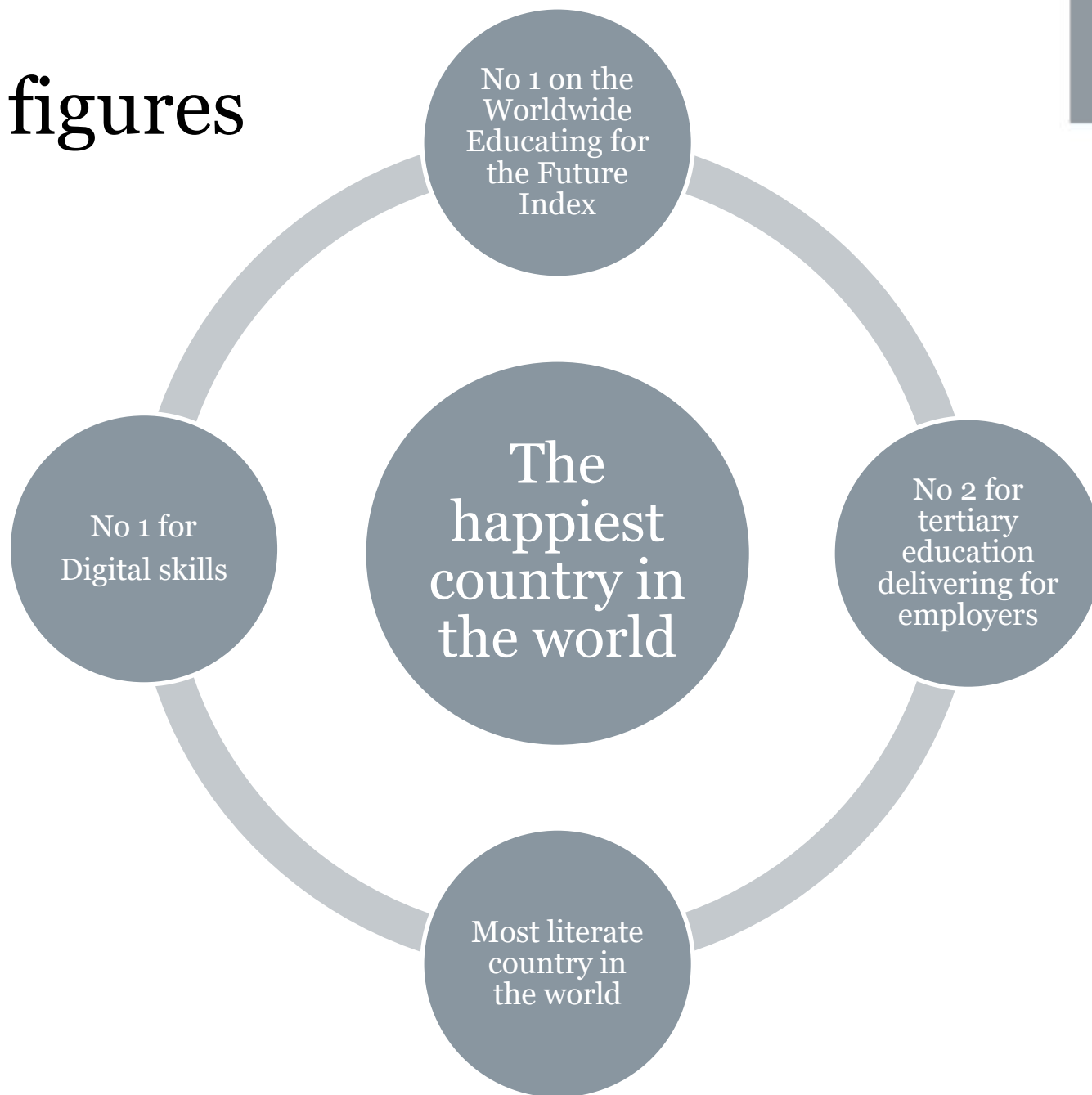
The Finnish Education System

in the City of Porvoo

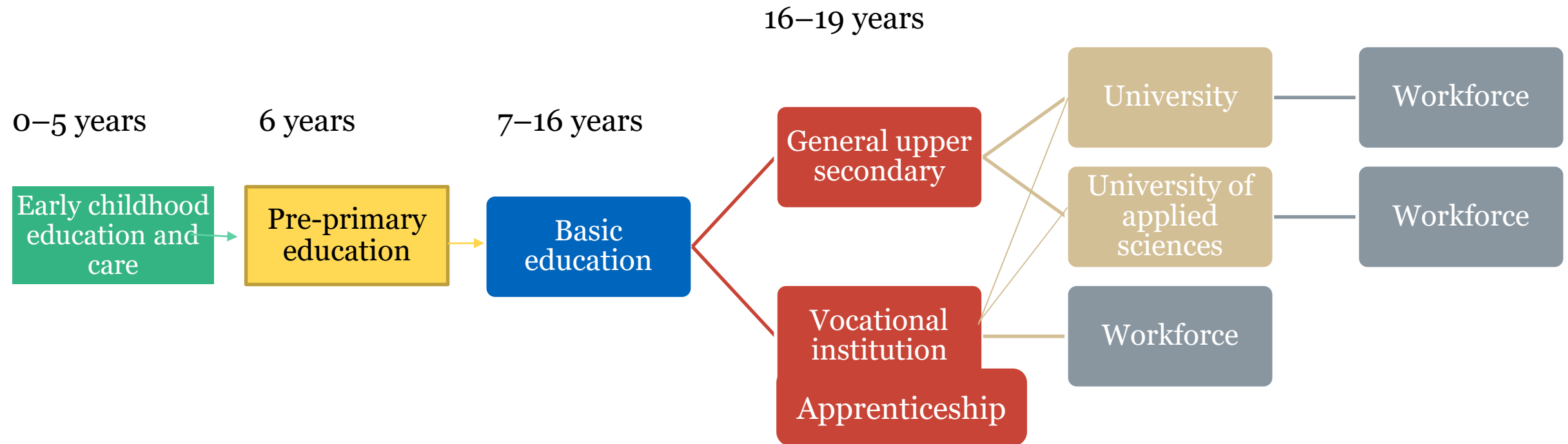
8.8.2022

Minna Särelä & Roni Holmberg

Facts and figures



The Finnish education system – an overview



Continuous learning: libraries, community college, basic education in the arts

Early childhood education and care

- There is a subjective right to attend early childhood education and care.
- Fees are moderate and based on parental income.
- Provided both in daycare centres and in schools.
- Learning through play is essential.



Pre-primary education

- Compulsory for children of the age of six.
- Provided both in daycare centres and in schools.
- Results are not used for ranking the schools.



Basic education

- Starts in the year when a child turns seven, lasts nine years.
- The local authority assigns each pupil a school place close to their home.
- Basic education is provided within a single structure.
- Each academic year lasts 190 days, running between mid-August and the beginning of June.
- Daily and weekly timetables are decided on by the schools.



Vocational education

- More than fifty vocational qualifications are available.
- A course comprises three years of study.
- Each course includes at least half a year of on-the-job learning.
- Close cooperation with the world of work is ensured through apprenticeships.
- Students are able to continue on to further vocational qualifications or specialist qualifications.



General upper secondary education

- Students are selected based on their grades.
- Courses are designed to last three years.
- Courses are not tied to specific grades.
- Students may combine studies from both general upper secondary education and vocational education.
- Ends with a national matriculation examination.



Universities of applied sciences

- Requirement for admission: completion of general upper secondary education or vocational education.
- Students are mainly selected based on entrance examination results.
- Courses comprise core and professional studies, elective studies and a final project.
- All degree studies include practical on-the-job learning.
- Studies last for 3.5–4 years of fulltime learning.
- Of the students, 40% have a background in vocational education.



Universities

- The Finnish matriculation examination provides general eligibility for universities.
- Students can study for bachelor's and master's degrees and postgraduate degrees – the licentiate and doctorate degrees.
- Students first complete a bachelor's degree, after which they may continue on to a master's degree.
- A master's degree generally takes five years (including the preceding bachelor's degree).
- Students have a background in general upper secondary education and vocational institutions.



Adult Education Centres

- Educational establishments that welcome all prospective learners and offer opportunities for a wide variety of recreational activities and study.
- Moderate participation fees facilitate learning for all.
- Accessible to everyone, regardless of their age or educational background.
- Learning is largely self-motivated and not aimed at achieving a formal qualification.
- Nordic passion empowering participation.
- Funded by the state, municipality and course participation fees.
- Tuition is offered in a wide variety of subjects, including languages, IT, arts and crafts, music, sports, cooking and wellbeing.
- Many adult education centres also provide Finnish as a foreign language tuition for immigrants.
- The centres serve as a local meeting place.

Finnish libraries

- The Finnish public library system is one of the most advanced and admired in the world.
 - Libraries are strongly involved in the implementation of the key values of Finnish society: *education and equality*.
 - The continuity and quality of library services are protected by *legislation*.
 - All services are *free of charge*.
-
- The building blocks of Finnish public libraries: *functioning society, digitality and promotion of reading*.
 - Libraries play a strong role for all in society as an open, free-of-charge, low-threshold service.
 - In library facilities, anyone can study, work, organise different activities and participate in them.
 - As both public and private services are increasingly moving online, libraries offer help in their use. Digital advice is available for people of all ages.
 - Access to digital library services and collections are part of the basic service libraries offer.
 - The promotion of reading, multiliteracy and various methods of reading for all age groups is a core element of libraries. There are numerous different programs to encourage reading, especially amongst children and young people.



Basic education in the arts

- Basic education in the arts is teaching focused on various forms of art, aimed primarily at children and young people, and taking place outside of schools.
- The objective of basic education in the arts is to provide students with the tools to:
 - express themselves
 - undertake vocational education in the arts
 - undertake higher education in the arts.
- In basic education in the arts, students can study architecture, visual arts, crafts, media arts, music, literary arts, circus arts, dance or theatre arts.
- The Ministry of Education and Culture may grant a statutory government transfer to the organisers of such education, based on the number of hours of tuition provided.

Strategy work

- Besides being organisers of education, schools and daycare centres are also organisations, working communities, and operating units that play an active role in defining and developing their own strategy.
 - Operating units participate in strategy work and its implementation.
 - Occupational wellbeing and operating as a working community are also pivotal in the education sector.
 - This strategy work can be seen in the likes of budget preparations and determining focus points and indicators.
- Frames of reference, such as curricula, have been defined for the operating units. However, the municipality, school, and individual teachers have a great deal of autonomy and freedom within this frame of reference.
 - Facilitating creativity and development.
 - Principals can be involved in selecting employees.
 - Teachers have a say in the teaching methods they use, taking into account factors such as students' needs.
- Strategic development also takes place in projects, with the option to apply for government subsidies for the realisation of such projects.
- Phenomenon-based development – a holistic way of thinking that takes into account the key mutual causalities of factors in learning environments.
 - Things are also approached as overall entities in schools, too – phenomenon-based learning.



Characteristics of the Finnish educational system

8.8.2022

Minna Särelä & Roni Holmberg

Extending compulsory education / continuous learning

- Close collaboration with working life is emphasised.
 - Those involved are aware of the needs of working life: reaction speeds to changing needs are developed, as is pre-emption of skills needs.
 - Sivistysakatemia (the education academy).
- Modern skills needs – 21st century skills – are taken into account.
- EU-level directives and standards are taken into consideration in education.
- Varied study paths are possible, e.g. from vocational education to university.
- Individual solutions and learning paths, e.g. proving skills through competence demonstrations.
- Culture and leisure time services allow everyone the opportunity to learn, from childhood to old age, through libraries and adult education centres, for example.

FINEEC – The Finnish Education Evaluation Centre

- An independent agency responsible for the evaluation of education in Finland.
- Carries out evaluations related to education from early childhood education and care to higher education.
- Its evaluations are free of any third-party influence.
- The Finnish Education Evaluation Centre operates within the government, under the Ministry of Education and Culture

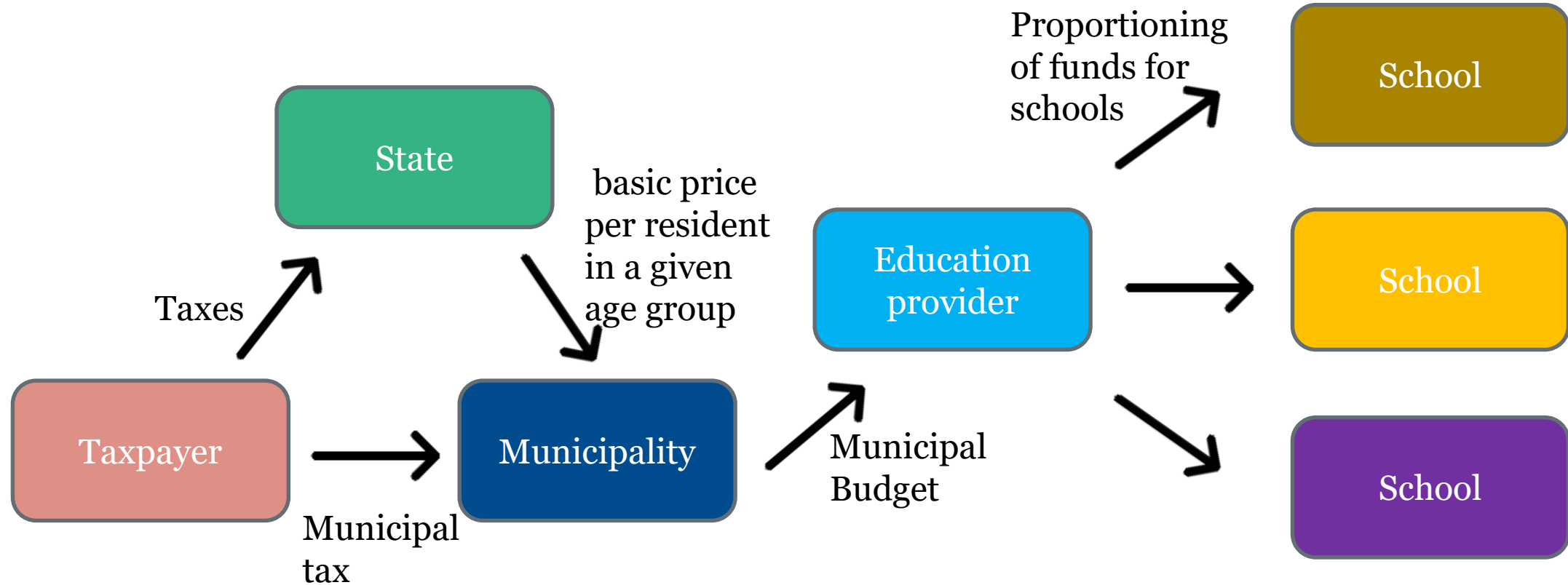


CIMO – *Centre for International Mobility*

- A subdivision of the Finnish National Agency for Education.
- Coordinates funds and finances for international learning.
- Oversees operations involving exchange students and Erasmus+.
- Coordinates funds for Finnish education abroad.
- Involved in coordinating Suomi-Schools around the world.



Financing of general education



The Finnish child strategy

- Based on three key ideas:
 1. The strategy will create a genuinely child- and family-friendly Finland where the rights of the child are respected.
 2. Children's rights and status will be mainstreamed, ensuring that children are consistently taken into consideration in all policies and activities alongside other members of society, and that they are informed of their rights
 3. The status of children in a vulnerable position will be safeguarded, and their needs will be better recognised.



A child friendly city

UNICEF's Child Friendly Cities initiative

This initiative helps cities and municipalities promote the realisation of the rights of children in weaker positions in particular.



1. A child friendly city action plan is being prepared in Porvoo.

- Municipal decision makers will also be informed about and trained on the initiative and related obligations.
- A decision will be made on Porvoo's child impact assessment model.

2. Porvoo aims to receive official Child Friendly City status within two years of the implementation of its action plan.

1 The right to health and wellbeing.

2 The right to education, play, rest and leisure time.

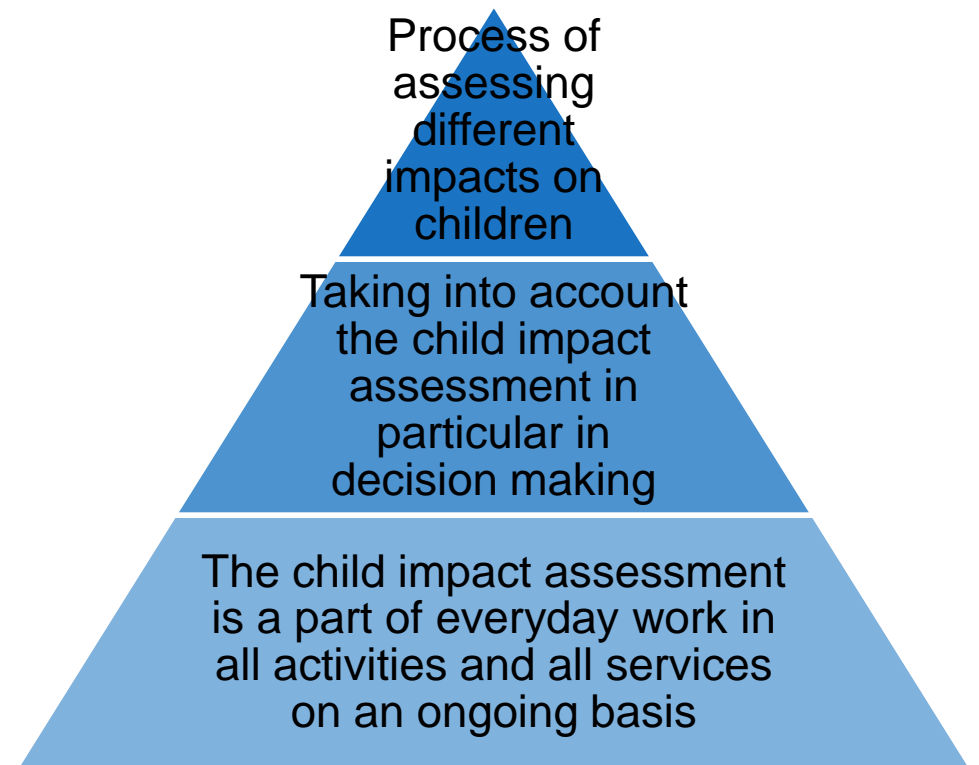
3 The right to protection.

4 The right to involvement in matters pertaining to their own life.

Child impact assessment model

- What kinds of impacts do decision options / activities have on different groups of children and how can the position of those children in weaker situations in particular be improved?
 - How do decision options / activities affect children's wellbeing in the longer and shorter term?
 - How are children and young people listened to and what are their views on the matter?
 - How can positive impacts be strengthened and negative ones eliminated or at least mitigated?

Porvoo's three-part operating model for assessing child impacts



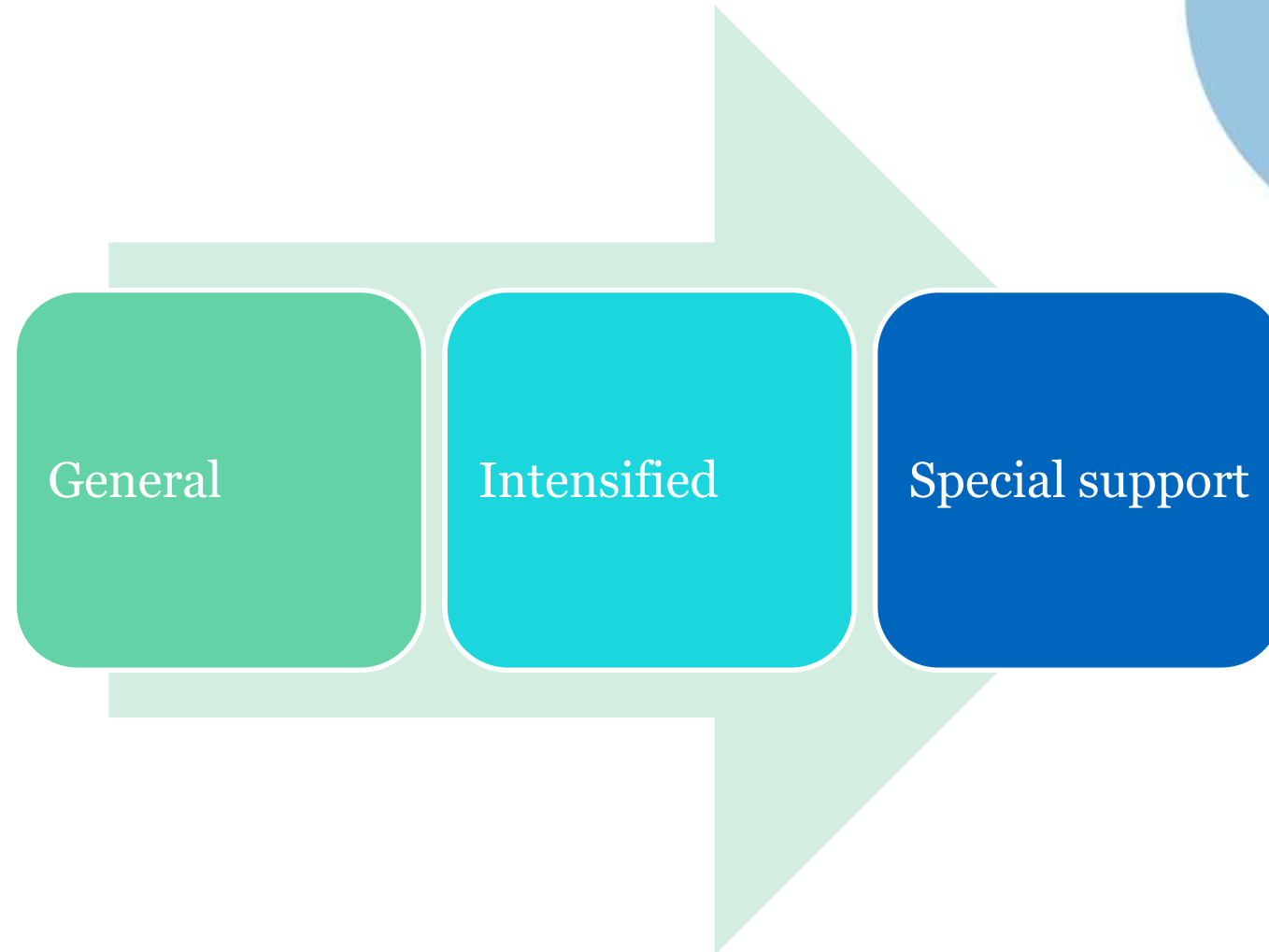
Support model in general education

The support model for students is divided into three stages.

All extra support is free.

Support can be given for a specific subject or the whole curriculum.

Categories are flexible, and if needed, a pupil can be moved from one support model to another.



School meals

- Free since 1948 in all basic/general upper secondary/vocational schools.
- Core principle of Finnish schools.
- University meals are partially subsidised.
- National nutritional guidelines are followed.
- Ethical/religious/health-related special dietary requirements are taken into consideration.



The Education and Culture Department of the City of Porvoo



8.8.2022

Minna Särelä & Roni Holmberg

PERSONNEL

1452

Finnish-language education operations	461
Swedish-language education operations	251
Early childhood education and care services	490
Culture and leisure time services	236

PROJECTS

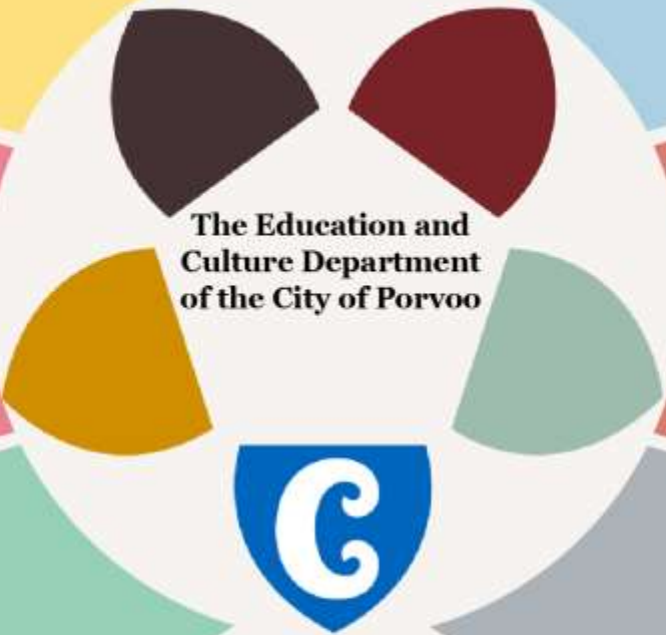
4 801 058 €

Allowances granted	4 170 531 €
Personal liability	684 527 €

SERVICE NETWORK

185

Day care centres	31
Comprehensive schools	24
General upper secondary schools	2
Adult education centres	80
Porvoo Region Music Institute	8-10
Porvoo Art School	1
Other locations	5+



The Education and Culture Department of the City of Porvoo

15448

Education services	4562
Early childhood education and care services	3388
Culture and leisure time services	every third municipal citizen
Adult education centres	6860

STRATEGIC SPEARHEADS

- UNICEF's Child Friendly Cities initiative
- Promotion of digitalisation
- Development of communications

130MEUR

Operating income	11,3 MEUR
Sales income	1,9 MEUR
Fee income	5,6 MEUR
Grants and allowances	2,9 MEUR
Other operating income	843 000 €
Rental income	747 100 €
Personnel expenses	69,1 MEUR
Facility expenses	24,1 MEUR

CUSTOMERSHIPS

STRATEGIC SPEARHEADS

FINANCES

Education Division

Director of Education, Culture and Sports Services

Director's
assistant

Key areas of responsibility

Administration / management of the Education Division

Administrative Manager

Finance team:

- 3 planners
- 3 office secretaries.

Administration team:

- 2 office secretaries.

Head of development

- 1 development coordinator
- 1 service coordinator.

1 systems expert
1 communications
planner

Education services in Finnish Head of education

- 15 schools
- 15 principals
- 7 school secretaries
 - 1 planner
- 1 coordinator of before and after school activities.

Pupil welfare services

- 6 psychologists
- 8 social workers

9 afternoon clubs
3 bilingual afternoon
clubs.

Education services in Swedish Head of education

- 10 schools
- 10 principals
- 4 secretaries at the schools,

Pupil and student
pastoral care

- 3 psychologists
- 5 social workers.

After school activities
at all schools.

Early childhood education and care services Head of early childhood education and care

Administration:

- 2 service coordinators
- 2 early childhood education and care instructors
- 3 early childhood education and care experts.

Daycare centres, family daycare

1 early childhood education and care instructor

21 daycare centres

17 daycare centre managers

22 family daycare childminders.

Support for development and learning

- 1 special needs teacher steering early childhood education and care.

**Other early childhood
education and care**

- substitute service manager.

Culture and leisure time services Director of Culture and Leisure Time 7 managers/principals.

1. library services 44.5
persons

2. cultural services 10
persons

3. sports services 44
persons+ 10 temporary
staff

4. youth services 23 persons

5. music institutes 65
public posts + 5.5 part-
time teachers

6. Art School 19 persons +
Sipoo

7. adult education centres
FI+SV 12 persons + 160
temporary part-time
teachers.



Finances and key figures

8.8.2022

Minna Särelä & Roni Holmberg

Key financial figures for education 2021

	Expenditure MEUR	Income MEUR	Personnel
Education Division management	1.5	0	13.5
Finnish-language education services	44.6	1.9	460.5
Swedish-language education services	21.6	0.8	251
Early childhood education and care services	37.0	3.1	491
Culture and leisure time services	23.6	4.9	236

Finances	MEUR 130
Operating income	MEUR 11.3
Sales income	MEUR 1.9
Fee income	MEUR 5.6
Grants and allowances	MEUR 2.9
Other operating income	EUR 843,000
Rental income	EUR 747,100
Personnel expenses	MEUR 69.1
Facility expenses	MEUR 24.1

Customerships

15,448



Finnish-language education services	3,889
Swedish-language education services	2,000
Early childhood education and care services	2,519
KoMbi	6,860
Culture Exercise Music Institute Art School Adult education centres Library Youth services	3 one third of residents



Personnel

1,483

		Management/ managers	Supervisors
Finnish-language education services	461	1	14+2
Swedish-language education services	251	1	10
Early childhood education and care services	479	1+4	23
Culture and leisure time services	236	1+7	approx. 12
Project employees	58 person years (frequently updated)		



Facilities used by the Education Division

185

Daycare centres (31 locations)	21
Family daycare locations	22
Comprehensive schools	24
General upper secondary schools	2
Cultural locations	approx. 5+
KoMbi/adult education at schools	80
Porvoo Region Music Institute and Porvoo Art School	approx. 8–10
Libraries	3+1
Youth facilities	3
Sports facilities	approx. 10

Education Division project portfolio

- Key figures 2021: 65 projects, total budget MEUR 5.9.
- Government subsidies granted on the basis of applications and funding from foundations facilitate development and additional resourcing.
- In 2021, thanks to government subsidies, elements such as the following were realised: additional support for learning and wellbeing at schools following the COVID-19 pandemic, additional resourcing for youth work, cultural activities involving residents, and implementation of new technology.

	Overall budget for active projects
Sector	Grant received + personal liability total
Early childhood education and care	EUR 898,985
Pre-primary education	EUR 135,750
Finnish-language education services	EUR 1,821,508
Swedish-language education services	EUR 835,040
Joint projects between education providers	EUR 380,271
Culture and leisure time services	EUR 1,785,270
TOTAL	EUR 5,856,824

The background of the slide is a repeating pattern of semi-circles. Each semi-circle is either red or grey. They are arranged in a grid-like fashion, with some overlapping. The red semi-circles are positioned in a way that they appear to be part of a larger, larger red shape, while the grey semi-circles are positioned to complete the shape or create a different visual effect. The overall effect is a modern, geometric pattern.

Education services

Finnish-language education services

Head of education

Administration

Head of education

- 1 planner responsible for pupil administration
- 1 planner responsible for transport
- 1 office secretary responsible for subcommittees, communications and decisions
- 1 coordinator of before and after school activities.

! Pupil administration processes, local schools, transportation, decisions made by authorities, operations of subcommittees, and dissemination of information. Steering of before and after school activities.

Jari Kettunen 15 April 2021

Teaching planning and development

Teaching planner

- curriculum work guidance and supervision
- development work and its coordination
- projects and their administration and monitoring.

Guidance on development of schools' teaching, projects and their administration; curriculum work; guidance of development groups and communications.

Support and guidance for learning

District principal for special needs support

- coordinating guidance counsellor
- immigrant education coordinator.
- special needs support processes and decisions
- school attendance instructors
- pupil welfare personnel.

Development of and consultation on special needs support, special needs support decisions, steering of immigrant education, steering of support services and pupil welfare.

Western district schools

Principal responsible for the district

- school secretaries
- schools providing basic education (8)
- school principals.

Collaboration between principals in the district, recruitment, uniform quality of teaching, pupil flows, and division of personnel resources.

Eastern district schools

Principal responsible for the district

- school secretaries.
- schools providing basic education (6)
- school principals.
-

Collaboration between principals in the district, recruitment, uniform quality of teaching, pupil flows, and division of personnel resources.

General upper secondary education

General upper secondary school principal

- Linnankoski Upper Secondary School and adult pathway
- principals of general upper secondary schools.

Management of general upper secondary operations, cooperation between upper secondary and higher education.

Swedish-language education services

Head of education

Administration

Head of education

- 3 school secretaries
 - pupil records
 - pupil decisions
 - sections
 - statistics
 - internal information.
- 1 responsible for school transportation, along with Finnish-language operations and preschool.

Curricula, quality, development

- Planner

- curricula: guidance and updating
- development work, quality, contact with groups, etc.
- external projects: applications, responsibility for
- ICT development and coordination.

Wellbeing and three-step support

Assistant principal

- three-step support
- instructors
- pupil welfare
- particularly gifted students
- consultation, support.

Western pedagogic district

Principal

- Strömborgska enhetsskolan comprehensive school
 - three other comprehensive schools
- responsibility for cooperation
 - recruitment
 - equality
 - resourcing

Eastern pedagogic district

Principal

- 1 school for grades 7–9
- 4 schools for grades 1–6
 - responsibility for cooperation
 - recruitment
 - equality
 - resourcing.

General upper secondary education

Principal

- Borgå Gymnasium upper secondary school
 - cooperation with secondary education in the region.

Swedish-language education services

Head of education

Western pedagogic district

District principal

- schools: 1 comprehensive school, 3 for grades 1–6
- responsibility for cooperation
 - recruitment
 - equality
 - resourcing

Eastern pedagogic district

District principal

- schools: 1 for grades 7–9, 4 for grades 1–6
- responsibility for cooperation
 - recruitment
 - equality
 - resourcing

General upper secondary education

Principal

- Borgå Gymnasium upper secondary school
- cooperation with secondary education in the region

Curricula, quality, development

1/2 planner

- curricula: guidance and updating
- development work, quality, contact with groups, etc.
- external projects: applications, responsibility for
- ICT development and coordination

Administration

Head of education

- secretary/coordinator
- budget and personnel matters
- pupil records and decisions
 - statistics
- internal information

Wellbeing and three-step support

Assistant principal

- three-step support
 - instructors
 - pupil welfare
- particularly gifted students
- consultation, support

Municipal school map

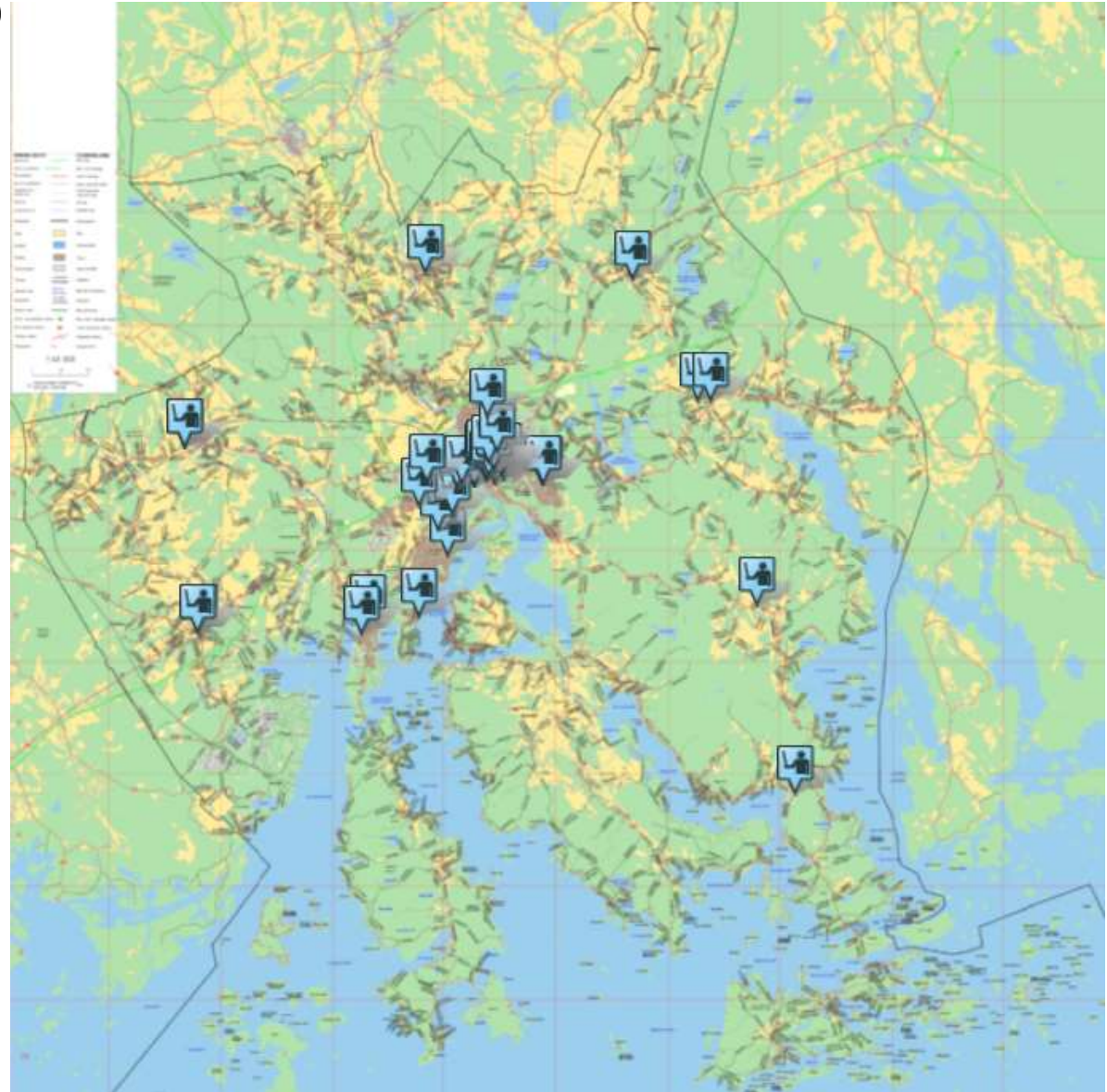
A total of 5,900 pupils spread between 25 schools.

The largest schools are located in the city centre, max. 600 pupils/school.

The smallest schools can be found in the countryside, the smallest of which has 35 pupils.

Grades 7-9 and upper secondary schools are situated in the city centre.

The municipal school network is being continuously developed.



Regional school network

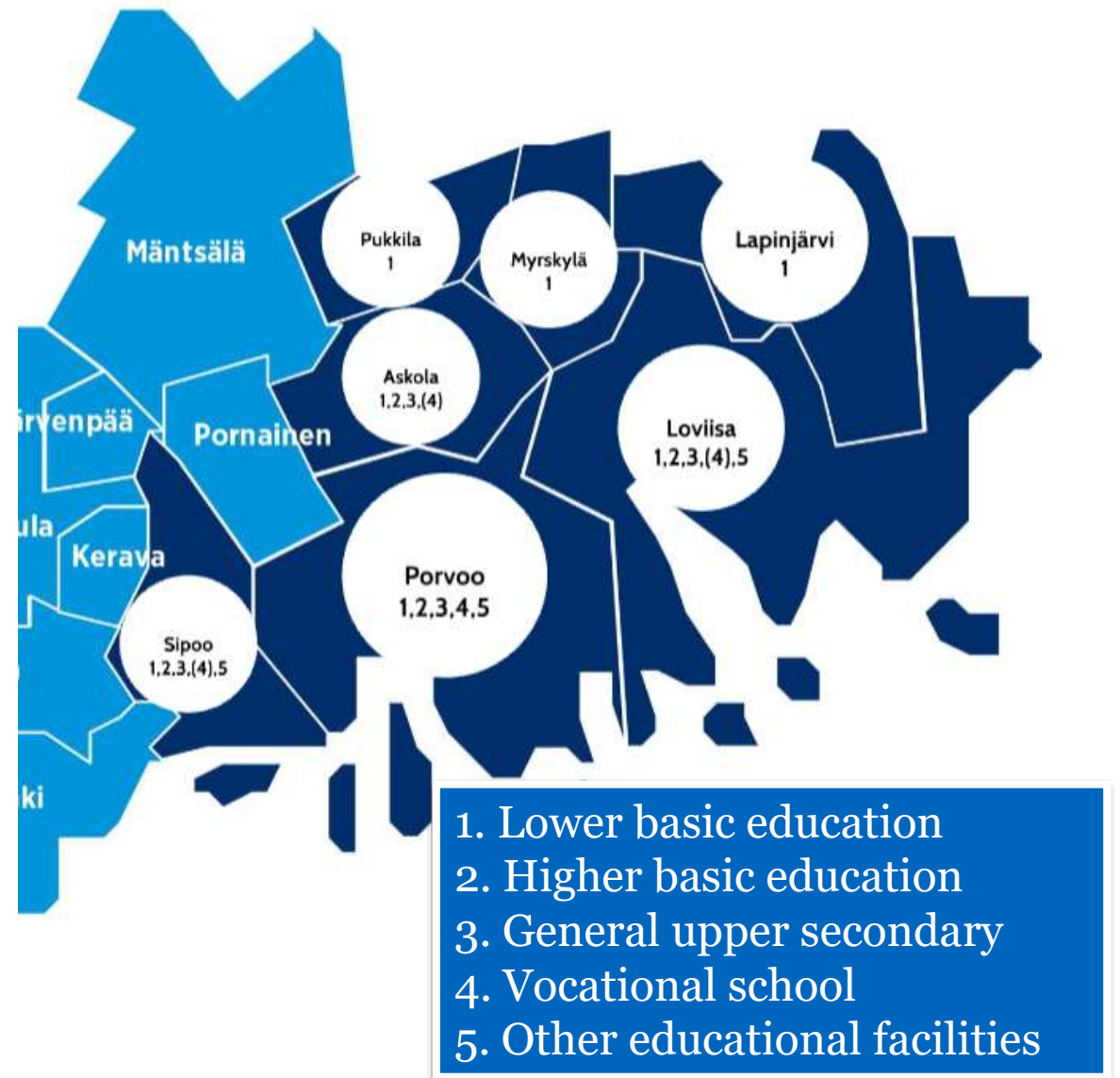
Seven municipalities – covering around 100,000 people.

Porvoo is the largest educational provider.

The nearest university is in Helsinki (50–100 km, 80–160 miles).

Many students from smaller municipalities come to Porvoo for higher education.

There is close cooperation between providers, especially in higher education.





Early childhood education and care services

Early childhood education and care services

Head of early childhood education and care

Administration

Head of early childhood education and care

- 2 service coordinators
- 2 early childhood education and care managers
- 3 early childhood education and care experts
- temporary early childhood education and care service director
- project employees (special government support)

Placement of children, service network, Daisy administrator, curriculum work, quality work, fostering cooperation, multicultural early childhood education and care, projects.

Development and teaching support

Lead special needs teacher for early childhood education and care

- 5 consultant special needs teachers
- 2 special needs teachers
- 17 childminders within development and teaching support
- special needs teachers for early childhood education and care recruited as project employees

Consultation, instruction, structural support measures. Equality grant coordination.

Municipal daycare centres

Early childhood education and care manager

- 17 daycare centre supervisors
- 232 early childhood education and care teachers
- 193 early childhood education and care childminders
- 17 rotating childminders
- project employees at daycare centres (language and culture teachers, childminders)

21 daycare centres. Personnel matters; finance; occupational health; equality, COVID-19 and exercise grants for early childhood education and care. Private daycare centres. Distribution of personnel in accordance with legislation.

Municipal family daycare

Early childhood education and care manager

- 22 family daycare providers who work from their own home
- 14 Finnish-speaking
- 8 Swedish speaking

Daisy administrator, head of communications, intranet and webpages. Private family daycare.

Service forms for early childhood education and care

Other early childhood education and care

Temporary service director

- vacant roles within early childhood education and care
- 3 early childhood education and care teachers
- 3 early childhood education and care childminders

Five clubs (FI + SV), family cafés, service voucher/daycare, private care support/family daycare, instruction, guidance and supervision. Home care support.

Central district of responsibility

Serve all profit centres

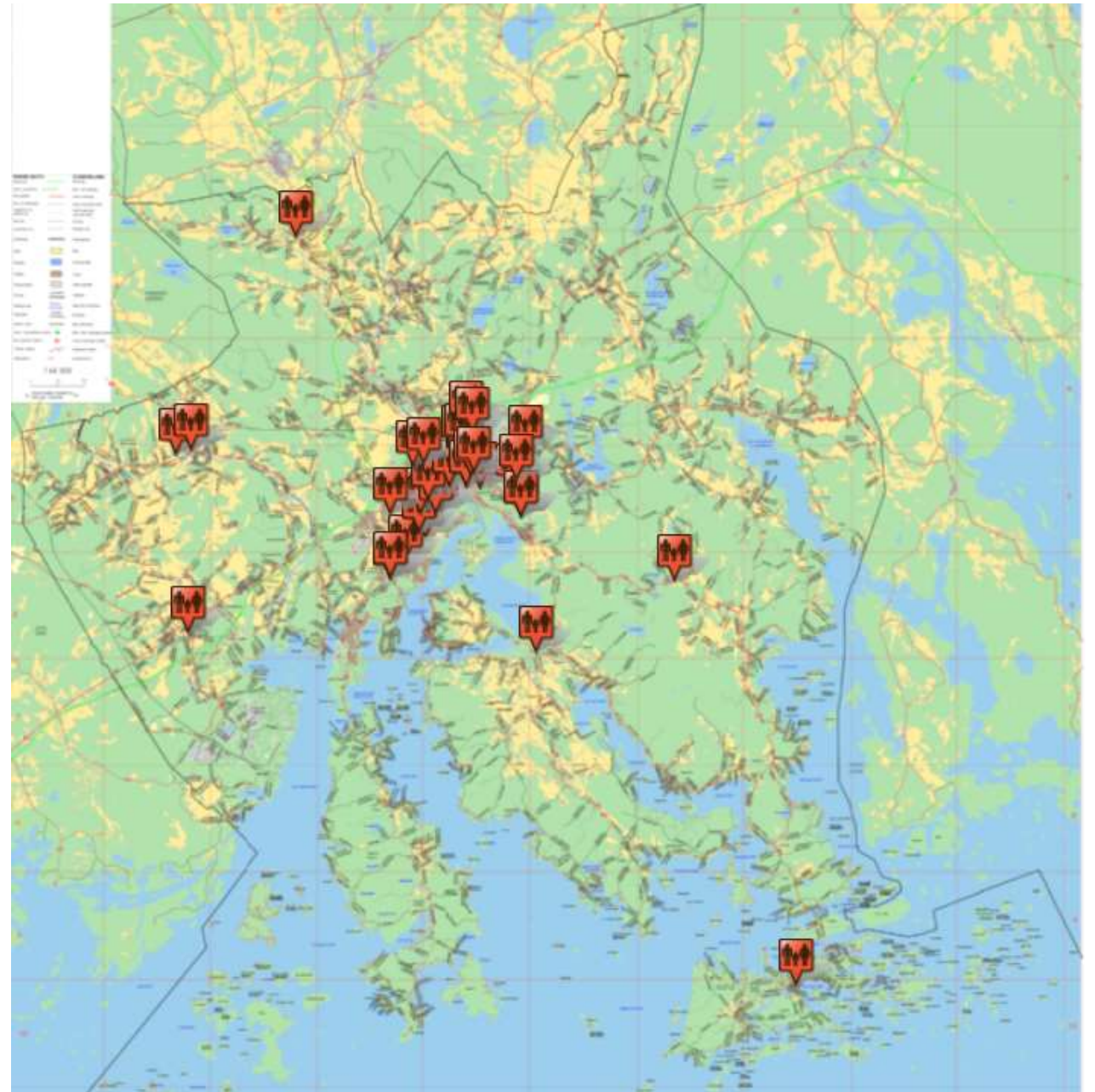
Early childhood education and care

21 daycare centres

Mostly located in the city centre.

Many daycare centres also provide facilities for pre-school education.

Smaller kindergartens are located in the countryside and in the archipelago, ensuring short distances to the nearest child care centre.





Culture and leisure time services

Culture and leisure time services: finances

Budget for 2021

Net MEUR 18.5 | EUR 372/resident



Library services

EUR 58.5 /resident

Financial statement 2019

Customers 357,768
Loans 750,907
Events 237



Cultural services

EUR 46/ resident

Financial statement 2019

Customers 96,000
Events 193



Sports services

EUR 118/ resident

Financial statement 2019

Swimming pool customers 200,000
Practice hours in the facilities 77,000
Service production outputs 223,000



Youth services

EUR 32/ persons

Financial statement 2019

Visits 65,000
Young people engaged with 350
Open facilities 8,000 h/y



Basic education in the arts

Porvoo Region Music Institute

EUR 16/ resident

Financial statement 2019

3,533 students, 1,233 of whom are from contractual municipalities
National Agency for Education 52,212

Porvoo Art School

EUR 5/ resident

Financial statement 2019

970 students, 145 of whom are based in Sipoo



Porvoo Adult Education Centre

EUR 14/ resident

Financial statement 2019

7,000 students, of whom 418 are based in Askola
National Agency for education 207,000

Culture and leisure time services: personnel

Director of Culture and Leisure Time

Administration and support services 2 | Project coordinator 1 | Development coordinator 0.5 | Communications planner 0.5
| Project personnel 1



Library services

44.5

Manager 1
Supervisors
Other permanent personnel
Project personnel



Cultural services

11

Manager 1
Other permanent personnel 9
Project personnel 1
Summer personnel 5



Sports services

44

Manager 1
Supervisors
Other permanent personnel
Project personnel
Temporary part-time teachers 10
Seasonal personnel



Youth services

29

Manager 1
Supervisor 1
Other permanent personnel 21
Project personnel 4
Fixed-term personnel 2



Basic education in the arts

Porvoo Region Music Institute

8

Principal 1
Assistant principals 3
Public positions for teachers 65
Part-time teachers
Other permanent personnel
Project personnel

Porvoo Art School

19

Principal 1
Public positions for teachers
Part-time teachers
Other permanent personnel
Project personnel



Porvoo Adult Education Centre

12+250

Principal 1
Assistant principals 2
Public positions for teachers 7
Other permanent personnel 2
Part-time teachers approx. 240
Project personnel and assistants 6 part-time

Culture and leisure time services: services and locations

Administration and support services
Management, development, projects, communications



Library services

3+1 libraries:
Uusimaa regional development Main library, Gammelbackan, Kevätkumpu libraries, Kerkkoo service point and mobile library



Cultural services

5+ cultural locations:
The Art Factory, Porvoo Art Hall, workshops, artist residence
Gallery Vanha Kappalaisentalo, J.L. Runeberg's home, museum work, Walter Runeberg's Sculpture Collection, Taiteilijatalo artists' house



Sports services

Approx. 10 facilities.
Service production, gyms and sports halls, school gyms, outdoor and local sports locations and areas, other provisions, incl. sites in the archipelago



Youth services

3 Youth facilities.
Service production in the form of targeted and outreach youth work, Zentra, Gammelbackan and Kevätkumpu youth facilities, Ohjaamo, mobile/outreach youth work, band rooms



Basic education in the arts

Porvoo Region Music Institute

Total of 8 contractual municipalities:
Artjärvi, Askola, Loviisa, Mäntsälä, Pornainen, Porvoo, Pukkila, Sipoo

Porvoo Art School

Sipoo (contractual municipality)



Porvoo Adult Education Centre

80 adult education locations.
Porvoo + Askola (contractual municipality)



Porvoo library

- **Number of visitors per year** approx. 360,000
- **Loans per year** approx. 750,000
- **Visitors to the library** (Helle libraries) can borrow from over a million books and other materials: films, audio books, music, sheet music, magazines, language courses, exercise equipment, board games, etc.
- **At libraries** visitors can read books and newspapers, attend events, use computers or 3D printers, study and work remotely, receive digital support and help with information retrieval, get book tips, meet with friends, and spend time.
- **Wide range of e-materials:** e-books, e-audio books, e-films, e-newspapers from all over the world, e-music.
- **The library home delivery service** is a free-of-charge service bringing books to the homes of Porvoo residents who cannot get to the library.
- **The mobile library serves** schools and daycare centres in the daytime, and residents in Porvoo's villages in the evenings.
- **Events at the library** total around 200 a year: author visits, talks, musical events, book groups, story times, exhibitions, gaming events, etc.



News: changes to the facilities at the main library, resulting in more space for children and young people, a workshop for all ages, a quiet room for students, severable reservable meeting rooms, better conditions for event organisers, and an independent use area.

Basic education in the arts in Porvoo: Porvoo Region Music Institute

- The Music Institute is a regional educational institute, offering in-person services and remote teaching in eight municipalities.
 - The Ministry of Education and Culture has granted organisation permits for two (2) arts sectors (music and dance).
 - The institute offers a wide range of instruments, with tuition available on 28 instruments and in 39 subjects.
 - Tuition is offered based on two syllabuses: the advanced syllabus and the general syllabus.
 - Tuition is offered in accordance with 20 subject-specific curricula.
 - There is also the option of remote tuition, which was developed partially with project funding from the Ministry of Finance.
 - Thanks to foundation funding, free music playschool services can be offered at daycare centres in three municipalities.
-
- Students: 3,299 and number of residents in the operating area: 122,236.
 - Lessons per week: 1,479 and per year: 51,765.
 - Teaching groups: 306 and teaching weeks: 35
 - Personnel 103 and public positions totalling 64 person working years
 - Total income from basic education in the arts in music and other music activities: EUR 1,484,600
 - Total costs of basic education in the arts in music and other music activities: EUR 4,908,300
 - Government proportion EUR 1,895,576
 - Income total: EUR 3,380,176



Basic education in the arts in Porvoo: Porvoo Art School

- Porvoo Art School provides basic education in visual arts for children and young people in Porvoo and Sipoo. The education provided leads to a completion certificate, which can be used to apply for further studies.
- The second largest art school in Finland, well-known and with a good reputation nationally and internationally.
- Total students: approx. 950, primarily children and young people. Of these approx. 800 in Porvoo and 150 in Sipoo.
- The Art School has one (1) principal, 14 arts subject teachers and five (5) part-time teachers.
- Each week sees 43 teaching groups, from morning (smallest) to evening (largest).
- There are an additional six (6) teaching groups for over-16s.
- Two (2) parent + child groups.
- Courses for adults, including short courses and wellbeing courses (subject to a fee) available on request.



Porvoo Adult Education Centre (KoMbi)

- Approx. 19,000 lessons a year.
- The range of courses extends from open university offerings to belly dance, Chinese language to rye bread baking, and yoga to fitness boxing.
- Approximately 1,000 classes/year are dedicated to teaching immigrants reading and writing skills, with a further 1,000–2,000 classes/year for other teaching.
- Students total approximately 7,000, with 65 native languages, including Finnish, Swedish, Estonian, Russian, Tagalog, Persian, and Korean. Courses at the centre are taken by 15,000 people a year.
- Ages range from baby to pensioner. The largest age groups of students are 60–69-year-olds with 1,393 people, 50–59-year-olds with 1,249 people and under-20s with 721 people.
- Funding of activities: the centre's own income accounts for 29.4%, the City contributes 36.7% and the government 33.9%.
- Strategic development and new initiatives are realised with government project funding.



Thank you!