



Grupo de Estudios
Territorio y

Desarrollo Sostenible

INTERNATIONAL CONFERENCE ON PUBLIC POLICY

T18P34:

Urban regeneration policies in Europe:

Theory and practice



Grupo de Estudios
Territorio y

Desarrollo Sostenible

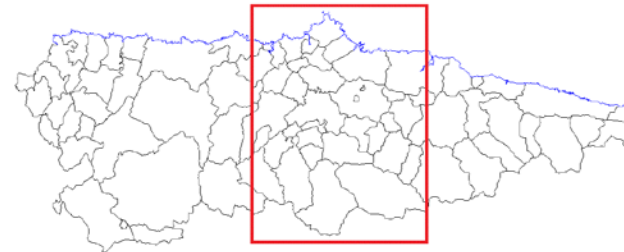
**“The territorial base of Integrated Urban
Regeneration policies. Theory and practice
in the Central Area of Asturias.”**

Miriam Alonso Naveiro y Rosario Alonso Ibáñez

ASTURIAS CENTRAL AREA

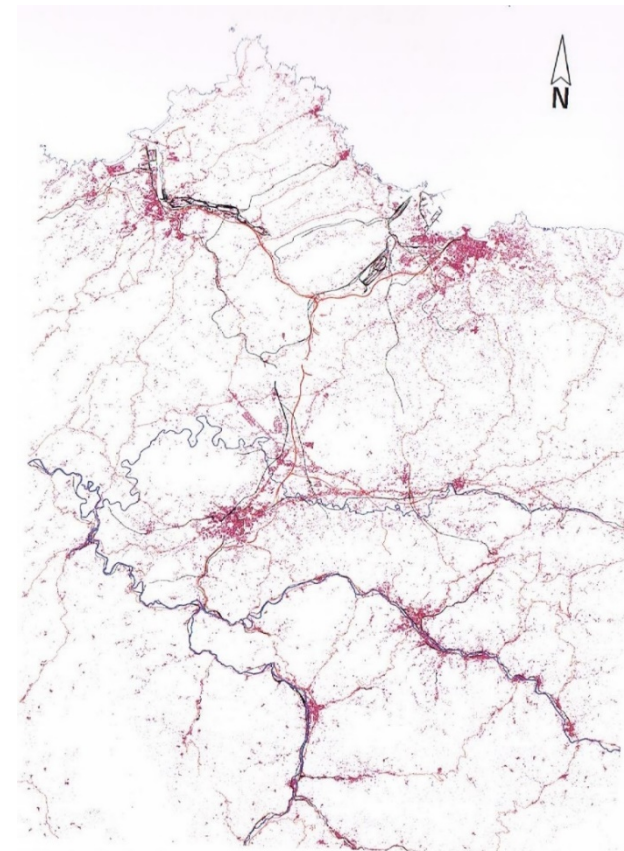


SPAIN



ASTURIAS

Área metropolitana	↔ Ministerio de Fomento (2013) ⁵ ↔
Madrid	6.052.247
Barcelona	5.030.679
Valencia	1.551.585
Sevilla	1.294.867
Málaga	953.251
Bilbao	910.578
Asturias	835.053



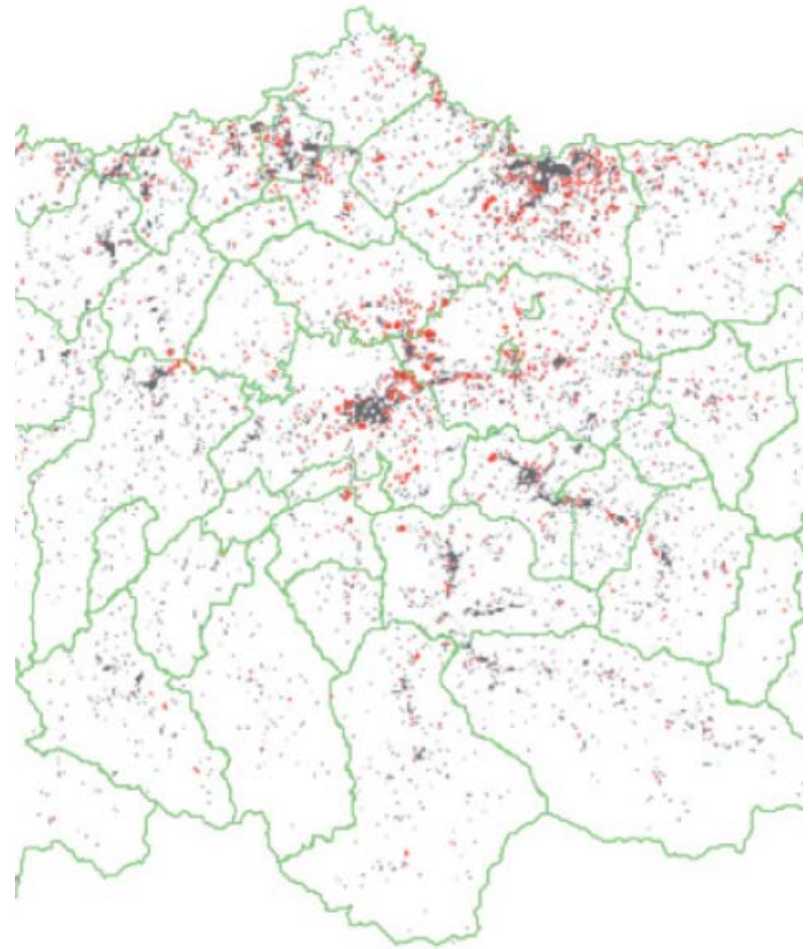
ASTURIAS CENTRAL AREA

7th SPANISH METROPOLITAN AREA
75% POPULATION IN 25% OF THE TERRITORY

Territorio y

THE PROBLEM BEYOND THE CITY LIMITS: THE URBAN SPRAWL

Urban development in the preceding years has led to **spreading urbanization**. That means this crisis has a **strong spatial component**.



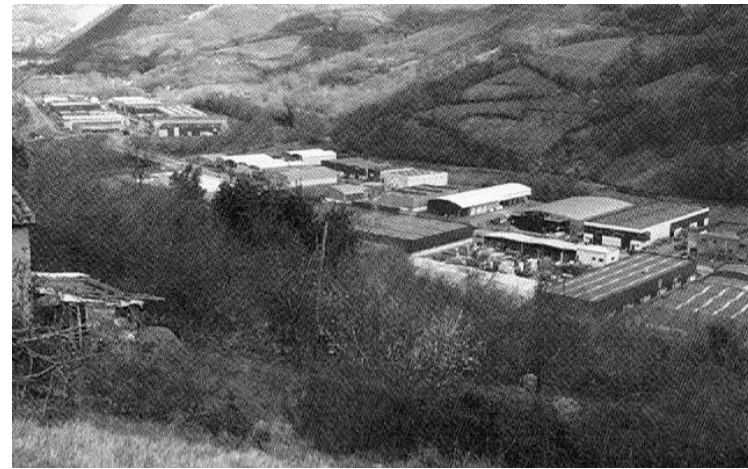
THE PROBLEM URBAN SPRAWL MEANS RURBANIZATION

Not only **spread the housing**, but also spread **all the urban assets**.

The result of the urban sprawl **processes** is called “**rurbanisation**”.



HOUSING SPRAWL “**474 dwellings per thousand inhabitants** 1998 to **567 dwellings per thousand inhabitants** 2009”(SADEI statistics)

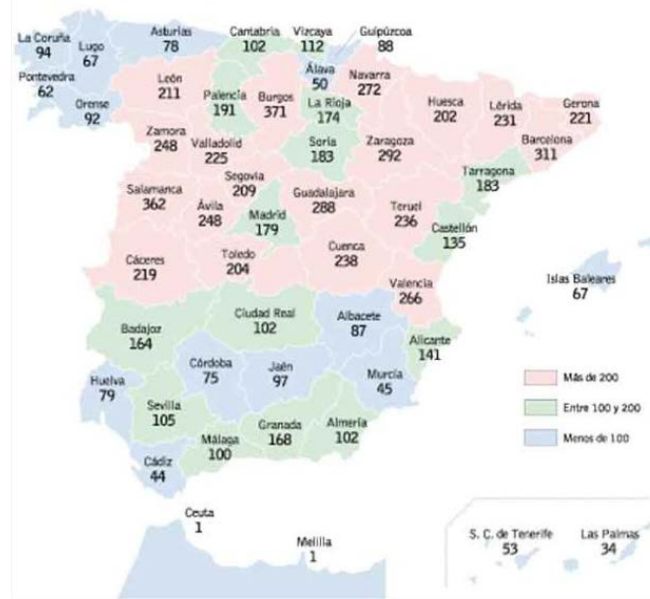


INDUSTRIAL SPRAWL
Territorio y



NEEDS SUPRAMUNICIPAL VIEW THROUGH POLYCENTRISM

Regional polycentric organizations begin to make sense



SPANISH MUNICIPALITIES

Denmark from 1.389 municipalities to 98 Spain from 8.116 municipalities to 600.



THEORETICAL APPROACH. REGIOLAB

Asturias from 78 municipalities to 21.

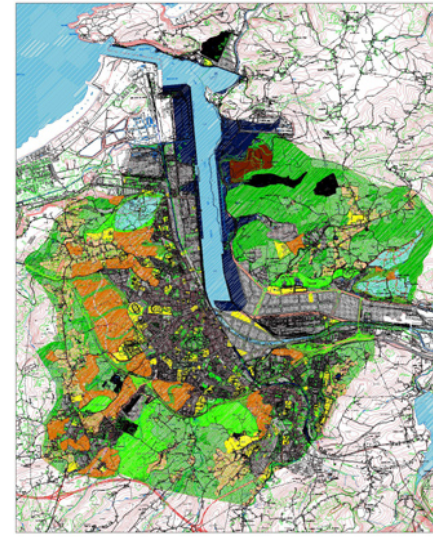
Territorio y

CHALLENGE SUPRAMUNICIPAL VIEW VERSUS CITIES COMPETITION

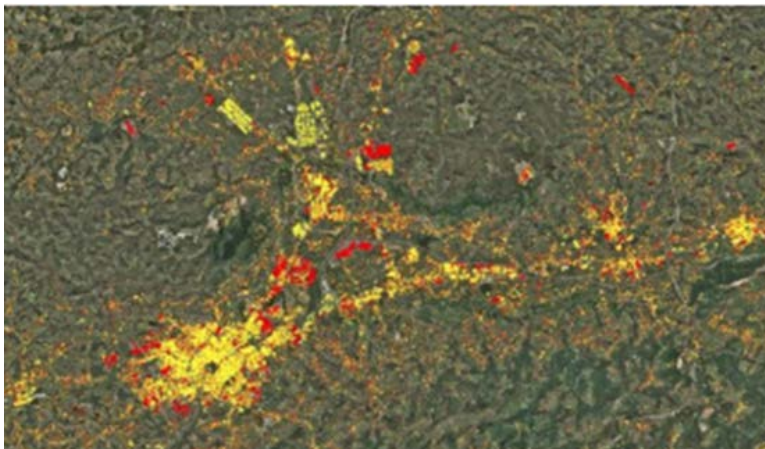
The possibility that the urban poles **merged administratively** seems remote.



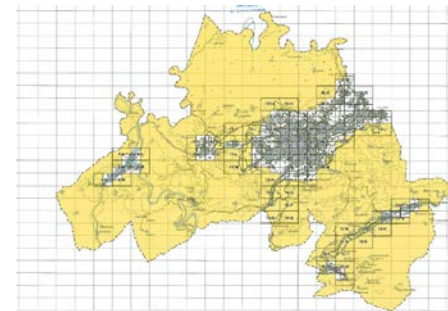
SIG: AVILÉS / CASTRILLÓN / CORVERA AS A CONTINUUM



PGOU: MUNICIPAL APPROACH



SIG: OVIEDO / POLA DE SIERO/ AS A CONTINUUM



PGOU: MUNICIPAL APPROACH

CONSEQUENCES CITIES COMPETITION LEADS TO PARTIAL APPROACHES

Interventions focus on **vulnerable neighbourhoods**.

“**Urban regeneration** seems to be mostly understood as a practice that is **exceptional** to some extent, rather than substantial”

(INTEGRATED URBAN REGENERATION IN THE EUROPEAN UNION, 2010)



EUROPEAN VIEW OVERCOMING PARTIAL APPROACHES

Common understanding of the integrated approach to urban development:

*“...as a planned process that **must transcend the partial ambits...**”*

(Toledo Referent Document on integrated urban regeneration to achieve a smarter, more sustainable and inclusive urban development in Europe), approved in the Toledo Declaration on 24th June 2010.

CHALLENGE INTEGRATED APPROACH CHALLENGES

How can we **achieve the new urban sustainable development?**

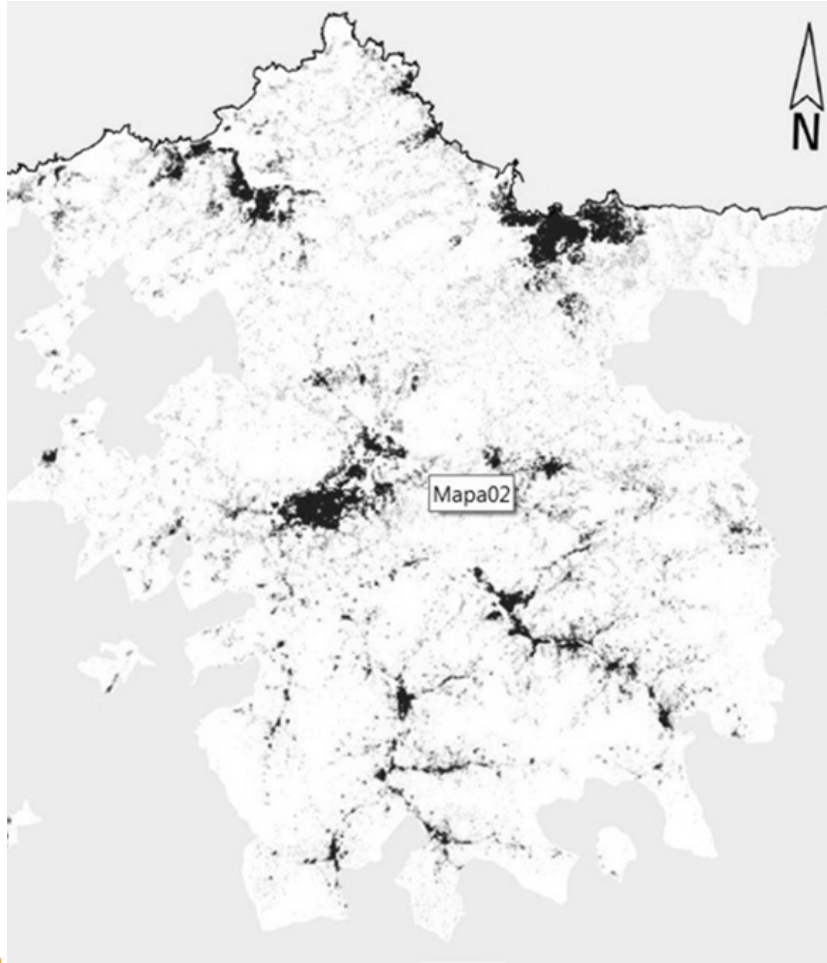
Figure 1 | Campbell's Planners Triangle



Source: Campbell, 1996

OUR VIEW INTEGRATED APPROACH NEEDS A NEW TERRITORIAL BASE

Rethinking territorial base of integrated urban regeneration policies.



REAL FUNCTIONAL AREA

Our ongoing research involves:

- Multidisciplinary.
- Multidimensional approach.

In order to develop:

- A new legal status.
- A new evaluation system.

That fit the polycentric areas.



FORO DE DEBATES SOBRE REGENERACIÓN URBANÍSTICA Y TERRITORIAL INTEGRADA:

Gijón

Jueves, 13 de noviembre de 2014, 17:30 h.
Centro Municipal Integrado de El Coto
(Sala Paraninfo)

Organiza:



Grupo de Estudios Jurídico-Sociales sobre
Territorio y Desarrollo Sostenible
<http://www.unioviado.es/Desarrollosostenible>

Colaboran:

Gijón

Centro Municipal
Integrado de El Coto



FORO DE DEBATES SOBRE REGENERACIÓN URBANÍSTICA Y TERRITORIAL INTEGRADA

Oviedo

Jueves, 7 de noviembre de 2013, 17:30 h.
Salón de Plenos de la Cámara de Comercio
C/ Dumense, nº 25, Oviedo

Organiza:



Grupo de Estudios Jurídico-Sociales sobre
Territorio y Desarrollo Sostenible
<http://www.unioviado.es/Desarrollosostenible>

<http://www.unioviado.es/Desarrollosostenible>

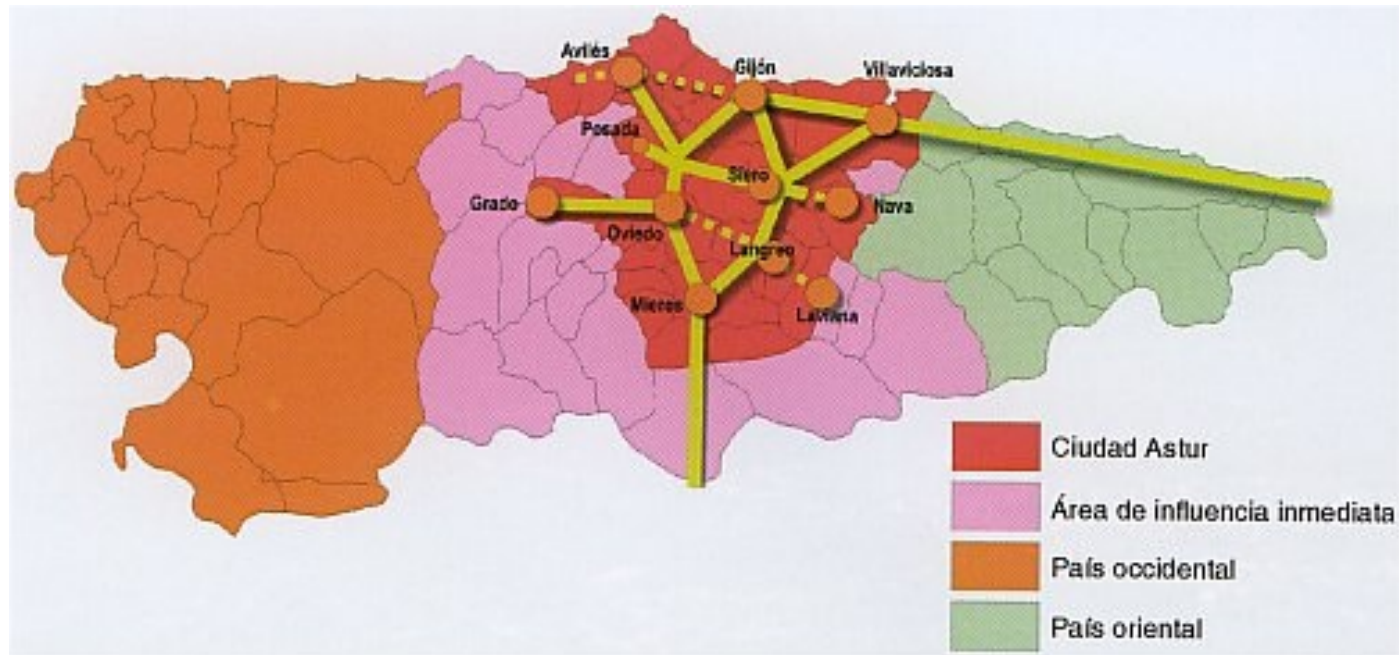
Territorio y

Desarrollo Sostenible

ANOTHER INTEGRATED THEORETICAL VIEWS. REGIONAL LEVEL

From many other documents a **comprehensive vision** is attempted, although they **have not come to an end**.

- “Introduction to Asturias Urban System Study” (EMILIO MURCIA 1980)
- “Astur City. A singular metropolitan Area” (CARRERO DE ROA / GUTIERREZ 2013)
- Metropolitan areas urban sprawl. The case of Asturias. (REGIOLAB 2013)



ASTUR CITY

Territorio y

ANOTHER INTEGRATED THEORETICAL VIEW. SUPRA-MUNICIPAL LEVEL

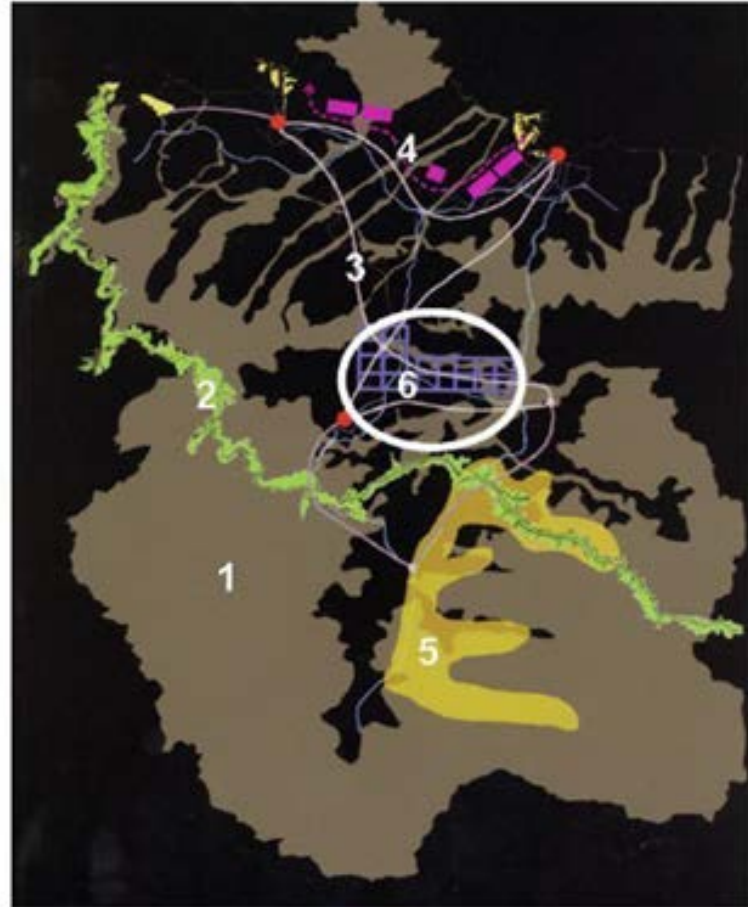
The need for new territorial bases to carry out urban transformation processes in the ACA has not been ignored by the Government of the Principality of Asturias.

- Oviedo Supra-municipal northeast Regional Project

DESARROLLO DE LA ESTRATEGIA DEL ÁREA CENTRAL

UN PROYECTO TERRITORIAL DE ESCALA INTERMEDIA

1. Sistema General Continuo de Espacios Verdes.
2. Estrategia para el río Nalón.
3. Trazado de un Sistema de Transporte Colectivo Interurbano independiente.
4. Un Corredor de Actividades entre los dos Puertos Regionales.
5. Transformación de las Cuencas Mineras históricas.
6. Reestructuración de un área dinámica de desarrollo periférico fragmentado.



Territorio y

Desarrollo Sostenible

INTEGRATED APPROACH IS NOT IMPLEMENTED: EXISTING TOOLS

Although there is a legal framework that allows urban and territorial sustainable and integrated development:

AT REGIONAL LEVEL

DOT TERRITORY PLANNING GUIDANCE HAS NOT COME TO AN END

- Review of the Territory Planning Guidance with specific guidelines for the Central Area (2006)
- Territory Planning Guidance and Sub Asturias Central Area Guidelines (2010)
- New Territory Planning Guidance and Sub Asturias Central Area Guidelines (2014)

PAT TERRITORIAL ACTION PROGRAMS STILL HAVE SECTORAL APPROACHES

- Highway Territorial Action Program 2009-2010

PET SPECIAL TERRITORIAL PLAN PARTIAL APPROACH / HAS NOT COME TO AN END

- Coalmining Special Territorial Plan (PARTIAL)
- Open Space System Special Territorial Plan of the Central Area (NOT TO AN END)
- Asturias Coastal Management Special Territorial Plan (MORE INTEGRATED VISION)

AT LOCAL LEVEL

STRATEGIC PLANS PARTIAL APPROACH

- GIJÓN STRATEGIC PLANS

INTEGRATED APPROACH IS NOT IMPLEMENTED: NEW TOOLS

There is **neither** organizational and **governance structure** of the ACA, **nor integrated urban regeneration planned processes** in the ACA

NEW TOOLS AT MUNICIPAL LEVEL STILL HAVE PARTIAL APPROACHES

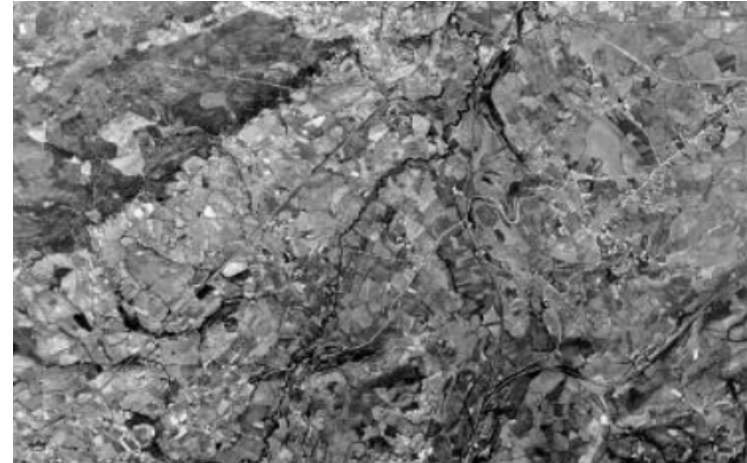
- **AGENDA 21. BASED ON EACH MUNICIPALITY**
 - Agenda 21 Oviedo
 - Agenda 21 Avilés
 - Agenda 21 Gijón
- **SUSTAINABLE INDICATOR SYSTEMS BASED ALSO IN CITIES' LIMITS**
 - MAYORS ADAPT
 - SYSTEM OF MUNICIPAL SUSTAINABILITY INDICATORS.

FINAL INSTRUMENTS

Urban Planning General Plans (PGOU) are the instruments that **finally set the pattern** for the development of each of the sub-cities that make up the ACA.

PARTIAL APPROACH CONFLICTS KEEP ON EXISTING

No progress has been made in the development of tools that is still limited to the existing spatial planning instruments to the present day.



IN CONCLUSION, POLICIES DO NOT INCORPORATE THE EUROPEAN CONCEPT OF INTEGRATED URBAN DEVELOPMENT CORRECTLY

Why?

Because the territorial base of the new tools developed still refers to the traditional administrative borders.

WHAT ARE OUR CITIES REAL FUNCTIONAL AREAS?

“The ‘Functional Urban Area’, meaning a wider urban system that is still functionally integrated with the core city. The functional urban area includes towns and villages that are physically separated by unbuilt land or water from the built-up city, but are at the same time economically and socially highly dependent on the urban core.” (EUROCITIES)



LET'S REFLECT ABOUT TERRITORIAL BASE!

